

# LED FIXTURES INDIA

## Street Light Fixtures Variants

- Driver Box Top Opening Street Light Fixtures
- Street Light Fixtures
- Street Light Fixtures Full Glass
- Slim Line Street Light Fixtures
- Cob Street Light Fixtures
- Tilttable Adopters for Street Light

## Flood Light/Bay Light Fixtures Variants

- Slim Flood Light Fixtures
- Flood Light Fixtures
- Cob Flood Light Fixtures
- Bay Light /Flood Light Fixtures
- Bay Light Fixtures
- Well Glass Light Fixtures



**'THERMAL EFFICIENT' HIGH PRESSURE  
DIE CAST LED FIXTURES**

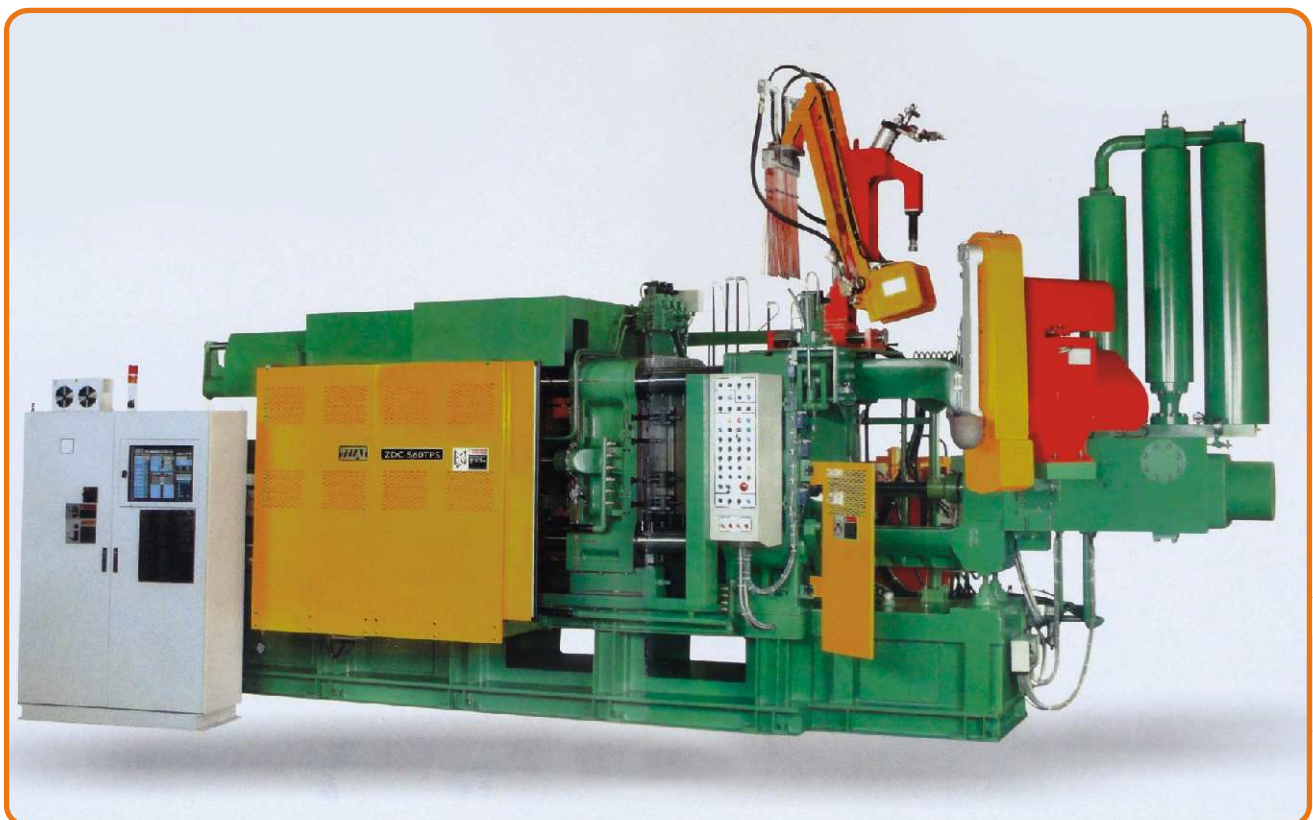
**LED FIXTURES INDIA** Brand LED fixtures are manufactured on world class high quality fully automatic imported high pressure die casting machines at our most modern plant at Faridabad.

Thermal management was prime focus while these fixtures are designed as the life span of led's and the driving electronics are dependent on controlled temperatures and the heat must be delivered to the world outside the fixture. We understand that the operating temperature of LED impacts the lighting colour and its overall lifetime.

While designing other areas such as height and thickness of fins of heat sink, driver box area, groove for gasket for sealing the body with cover to make fixture leak proof were also of key importance.

As these fixtures have to withstand odd weather conditions, these are manufactured by using top most quality ADC-12 alloy and are supplied duly powder coated with pasted toughened glass of 4mm of 90% transparency, stainless steel bolts which don't get rusted and high quality silicon sponge gasket.

## Let us implement your move to LED



**PRODUCTS**

**MODEL NAME**

**PAGE No.**



**DRIVER BOX TOP OPENING STREET LIGHT FIXTURES**

**03**



**STREET LIGHT FIXTURES**

**04**



**STREET LIGHT FIXTURES FULL GLASS**

**05**



**SLIM LINE STREET LIGHT FIXTURES**

**06**



**COB STREET LIGHT FIXTURES**

**07**



**TILTABLE ADAPTERS FOR STREET LIGHT FIXTURE**

**08**



**SLIM FLOOD LIGHT FIXTURES**

**09**



**FLOOD LIGHT FIXTURES**

**10**



**COB FLOOD LIGHT FIXTURES**

**11**



**BAY LIGHT / FLOOD LIGHT FIXTURES**

**12**



**BAY LIGHT FIXTURES**

**13**



**WELL GLASS LIGHT FIXTURES**

**14**

**IP 67 Certified.**



## DRIVER BOX TOP OPENING STREET LIGHT FIXTURES

| MODEL            | Overall Dimension      | LED Area              | Driver Area           | Pipe Dia |
|------------------|------------------------|-----------------------|-----------------------|----------|
| DTSL-2050        | 332L x 140W x 86H mm.  | 173L x 96W x 10H mm.  | 128L x 78W x 55H mm.  | Ø40 mm.  |
| DTSL-5080        | 400L x 195W x 100H mm. | 215L x 148W x 10H mm. | 183L x 92W x 68H mm.  | Ø50 mm.  |
| DTSL-80110       | 440L x 230W x 108H mm. | 250L x 182W x 10H mm. | 213L x 100W x 74H mm. | Ø50 mm.  |
| DTSL-80110 (60)  | 440L x 230W x 108H mm. | 250L x 182W x 10H mm. | 213L x 100W x 74H mm. | Ø60 mm.  |
| DTSL-120180      | 502L x 257W x 108H mm. | 280L x 210W x 10H mm. | 245L x 130W x 74H mm. | Ø50 mm.  |
| DTSL-120180 (60) | 502L x 257W x 108H mm. | 280L x 210W x 10H mm. | 245L x 130W x 74H mm. | Ø60 mm.  |

The Fixtures are supplied with following accessories:

- M4x12mm Stainless Steel Allen bolts – 10 -12 Nos.
- M8x40 Stainless Steel Hex bolts – 2 Nos.
- 86% Transparent toughened glass.
- Silicon sponge gasket
- Box Packed in a corrugated box.



**IP 67 Certified.**



## STREET LIGHT FIXTURES

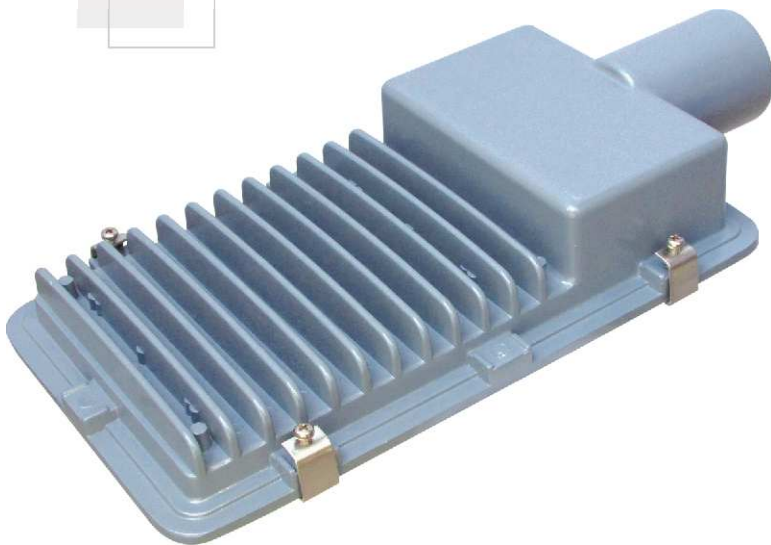
| MODEL      | Overall Dimension     | LED Area              | Driver Area           | Pipe Dia |
|------------|-----------------------|-----------------------|-----------------------|----------|
| SL-2040    | 346L x 123W x 68H mm. | 173L x 96W x 14H mm.  | 96L x 80W x 60H mm.   | Ø40 mm.  |
| SL-4070    | 391L x 186W x 78H mm. | 198L x 148W x 14H mm. | 148L x 93W x 70H mm.  | Ø50 mm.  |
| SL-70100   | 462L x 231W x 80H mm. | 250L x 182W x 14H mm. | 182L x 104W x 75H mm. | Ø50 mm.  |
| SLM-100150 | 520L x 260W x 85H mm. | 280L x 210W x 14H mm. | 210L x 130W x 78H mm. | Ø50 mm.  |
| SLM-150200 | 600L x 290W x 85H mm. | 320L x 248W x 15H mm. | 248L x 147W x 76H mm. | Ø60 mm.  |

The Fixtures are supplied with following accessories:

- M4x12mm Stainless Steel Allen bolts – 6 -10 Nos.
- M8x40 Stainless Steel Hex bolts – 2 Nos.
- 86% Transparent toughened glass glued with silicon adhesive
- Silicon sponge gasket
- Box Packed in a corrugated box.



**IP 67 Certified.**

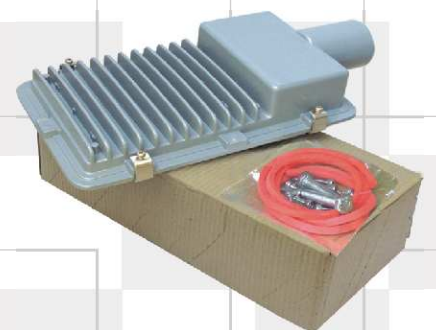


## STREET LIGHT FIXTURES FULL GLASS

| MODEL       | Overall Dimension     | LED Area              | Driver Area          | Pipe Dia |
|-------------|-----------------------|-----------------------|----------------------|----------|
| SL-0920 GLS | 330L x 96W x 56H mm.  | 136L x 75W x 14H mm.  | 106L x 75W x 52H mm. | Ø40 mm.  |
| SL-0930 GLS | 265L x 124W x 56H mm. | 130L x 100W x 10H mm. | 100L x 71W x 48H mm. | Ø40 mm.  |
| SL-2040 GLS | 346L x 123W x 58H mm. | 173L x 96W x 14H mm.  | 96L x 80W x 54H mm.  | Ø40 mm.  |
| SL-3060 GLS | 300L x 160W x 56H mm. | 154L x 135W x 12H mm. | 135L x 82W x 48H mm. | Ø40 mm.  |
| SL-4070 GLS | 391L x 186W x 64H mm. | 198L x 148W x 14H mm. | 148L x 93W x 60H mm. | Ø50 mm.  |

The Fixtures are supplied with following accessories:

- Stainless Steel Glass holding clamp with screw.
- M8x40 Stainless Steel Hex bolts – 2 Nos.
- 86% Transparent toughened glass.
- Silicon sponge gasket.
- Box Packed in a corrugated box.



**IP 67 Certified.**



## SLIM LINE STREET LIGHT FIXTURES

| MODEL        | Overall Dimension    | LED Area       | Driver Area          | Pipe Dia |
|--------------|----------------------|----------------|----------------------|----------|
| SL SLIM 0930 | 380L x 75W x 70H mm. | 90L x 30W mm.  | 155L x 50W x 28H mm. | Ø40 mm.  |
| SL SLIM 18   | 340L x 78W x 52H mm. | 85L x 58W mm.  | 175L x 50W x 28H mm. | Ø40 mm.  |
| SL SLIM 24   | 330L x 78W x 70H mm. | 116L x 65W mm. | 126L x 60W x 35H mm. | Ø40 mm.  |
| SL SLIM 35   | 400L x 78W x 52H mm. | 116L x 55W mm. | 200L x 50W x 28H mm. | Ø40 mm.  |

The Fixtures are supplied with following accessories:

- Stainless Steel Hardware.
- Silicon Sponge gasket.
- Poly carbonate Transparent cover.
- Box Packed in a corrugated box.



**IP 67 Certified.**



## COB STREET LIGHT FIXTURES

| MODEL      | Overall Dimension     | No. of COB | Driver Area          | Pipe Dia |
|------------|-----------------------|------------|----------------------|----------|
| SL COB-30  | 400L x 171W x 50H mm. | 1 Number   | 172L x 95W x 30H mm. | Ø40 mm.  |
| SL COB-50  | 510L x 215W x 70H mm. | 1 Number   | 215L x 80W x 30H mm. | Ø50 mm.  |
| SL COB-100 | 720L x 275W x 87H mm. | 2 Numbers  | 280L x 95W x 40H mm. | Ø60 mm.  |

The Fixtures are supplied with following accessories:

- Glass Lens with silicon sponge gasket & Holder.
- M4 Stainless Steel Allen bolts – 10 -14 Nos.
- M8 Stainless Steel Allen bolts – 2 Nos.
- 94% Transparent high boro silicate Glass Lens 3.3.
- Box Packed in a corrugated box.



**IP 67 Certified.**



## TILTABLE ADOPTERS FOR STREET LIGHT FIXTURES

| MODEL  | Pole Diameter |
|--------|---------------|
| TA -32 | Ø32 mm.       |
| TA -40 | Ø40 mm.       |
| TA -50 | Ø50 mm.       |
| TA -60 | Ø60 mm.       |

Tiltable adopters are available for all pole size diameters

The Adopters are supplied with following accessories:

- M8 Stainless Steel Allen Bolts – 2 Nos.
- Box Packed in a corrugated box.



**IP 67 Certified.**



## SLIM FLOOD LIGHT FIXTURES

| MODEL   | Overall Dimension      | LED Area              | Driver Area           |
|---------|------------------------|-----------------------|-----------------------|
| SFL-10  | 128L x 120W x 38H mm.  | 86L x 59W x 204H mm.  | 86L x 30W x 24H mm.   |
| SFL-20  | 185L x 180W x 44H mm.  | 144L x 95W x 23H mm.  | 144L x 37W x 27H mm.  |
| SFL-30  | 228L x 222W x 49H mm.  | 185L x 120W x 28H mm. | 185L x 40W x 33H mm.  |
| SFL-50  | 228L x 222W x 49H mm.  | 285L x 120W x 38H mm. | 185L x 40W x 33H mm.  |
| SFL-100 | 285L x 275W x 64H mm.  | 220L x 170W x 38H mm. | 220L x 145W x 50H mm. |
| SFL-150 | 320L x 320W x 82H mm.  | 265L x 150W x 38H mm. | 265L x 60W x 38H mm.  |
| SFL-200 | 355L x 355W x 103H mm. | 300L x 165W x 46H mm. | 300L x 80W x 46H mm.  |

The Fixtures are supplied with following accessories:

- All Stainless Steel Hardware included.
- Toughened glass.
- Silicon sponge gasket.
- Box packed in a corrugated box.



**IP 67 Certified.**



## FLOOD LIGHT FIXTURES

| MODEL     | Overall Dimension      | LED Area              | Driver Area           |
|-----------|------------------------|-----------------------|-----------------------|
| FL-2040   | 182L x 143W x 102H mm. | 148L x 110W x 28H mm. | 105L x 70W x 34H mm.  |
| FL-3050   | 218L x 180W x 130H mm. | 182L x 142W x 32H mm. | 160L x 90W x 40H mm.  |
| FL-6090   | 280L x 228W x 150H mm. | 228L x 180W x 40H mm. | 160L x 90W x 40H mm.  |
| FL-100150 | 388L x 290W x 155H mm. | 302L x 202W x 41H mm. | 210L x 140W x 49H mm. |
| FL-150250 | 425L x 328W x 178H mm. | 350L x 248W x 41H mm. | 246L x 180W x 59H mm. |
| FL-250350 | 515L x 328W x 178H mm. | 440L x 248W x 41H mm. | 246L x 180W x 59H mm. |

The Fixtures are supplied with following accessories:

- All Stainless Steel Hardware included.
- 86% Transparent toughened glass.
- Silicon sponge gasket – 2 Nos.
- Box packed in a corrugated box.



**IP 67 Certified.**



## COB FLOOD LIGHT FIXTURES

| MODEL         | Overall Dimension      | No. of COB | Driver Area           |
|---------------|------------------------|------------|-----------------------|
| FL COB-5070   | 251L x 200W x 115H mm. | 1 Number   | 160L x 90W x 40H mm.  |
| FL COB-100140 | 370L x 235W x 130H mm. | 2 Number   | 210L x 140W x 50H mm. |
| FL COB-150210 | 513L x 235W x 130H mm. | 3 Numbers  | 280L x 140W x 50H mm. |

The Fixtures are supplied with following accessories:

- Poly carbonate Lens with silicon sponge gasket & Holder.
- M4 Stainless Steel screw – 10 -18 Nos.
- M8 Stainless Steel Hex bolts – 2 Nos.
- Box Packed in a corrugated box.



**IP 67 Certified.**



## BAY LIGHT / FLOOD LIGHT FIXTURES

| MODEL         | Overall Dimension     | LED Area              | Driver Area           |
|---------------|-----------------------|-----------------------|-----------------------|
| SL FL-70100   | 402L x 231W x 80H mm. | 250L x 182W x 14H mm. | 182L x 104W x 75H mm. |
| SLM FL-100150 | 456L x 260W x 85H mm. | 280L x 210W x 14H mm. | 210L x 130W x 78H mm. |
| SLM FL-150200 | 513L x 290W x 85H mm. | 320L x 248W x 15H mm. | 248L x 147W x 76H mm. |

The Fixtures are supplied with following accessories:

- M4 Stainless Steel Allen bolts & nuts – 10 Nos.
- M8 Stainless Steel Hex bolts – 2 Nos.
- M8 Stainless Steel spring / plain washer – 4 Nos.
- M6 Allen bolts / washer – 4 Nos.
- 86% Transparent toughened glass glued with silicon adhesive
- Silicon sponge gasket
- Box Packed in a corrugated box.



**IP 67 Certified.**



## BAY LIGHT FIXTURES

| MODEL     | Overall Dimension | LED Area       | Driver Area           |
|-----------|-------------------|----------------|-----------------------|
| BL-60100  | Ø285 x 130H mm.   | Ø228 x 12H mm. | 160L x 90W x 40H mm.  |
| BL-100150 | Ø335 x 135H mm.   | Ø278 x 12H mm. | 210L x 140W x 49H mm. |
| BL-150250 | Ø440 x 135H mm.   | Ø345 x 16H mm. | 246L x 180W x 59H mm. |

The Fixtures are supplied with following accessories:

- All Stainless Steel Hardware included.
- 86% Transparent toughened glass.
- Silicon sponge gasket – 2 Nos.
- Box packed in a corrugated box.



**IP 67 Certified.**




## WELL GLASS LIGHT FIXTURES

| MODEL  | Overall Dimension | LED Area | Driver Area          |
|--------|-------------------|----------|----------------------|
| WG-35D | Ø153 x 230H mm.   | Ø125 mm. | 116L x 84W x 70H mm. |
| WG-35G | Ø160 x 168H mm.   | Ø125 mm. | 116L x 84W x 70H mm. |

The Fixtures are supplied with following accessories:

- Poly carbonate cover with silicon sponge gasket.
- Toughened glass.
- Stainless Steel Hardware included.
- Box Packed in a corrugated box.



**LED**  **FIXTURES** INDIA

**'THERMAL EFFICIENT'  
HIGH PRESSURE DIE CAST  
LED FIXTURES**



*Manufactured by :*

**INDIAN AUTOMATED DIE CASTING CO. PVT. LTD.**

Khasra No. 171/2/2, Bhakri Pali Road, Bhakri, FARIDABAD-121001 (Haryana)

Mobile No. : 91-9350014123, 9958630610, 9810712782, 9810413392

Website : [www.ledfixturesindia.com](http://www.ledfixturesindia.com)